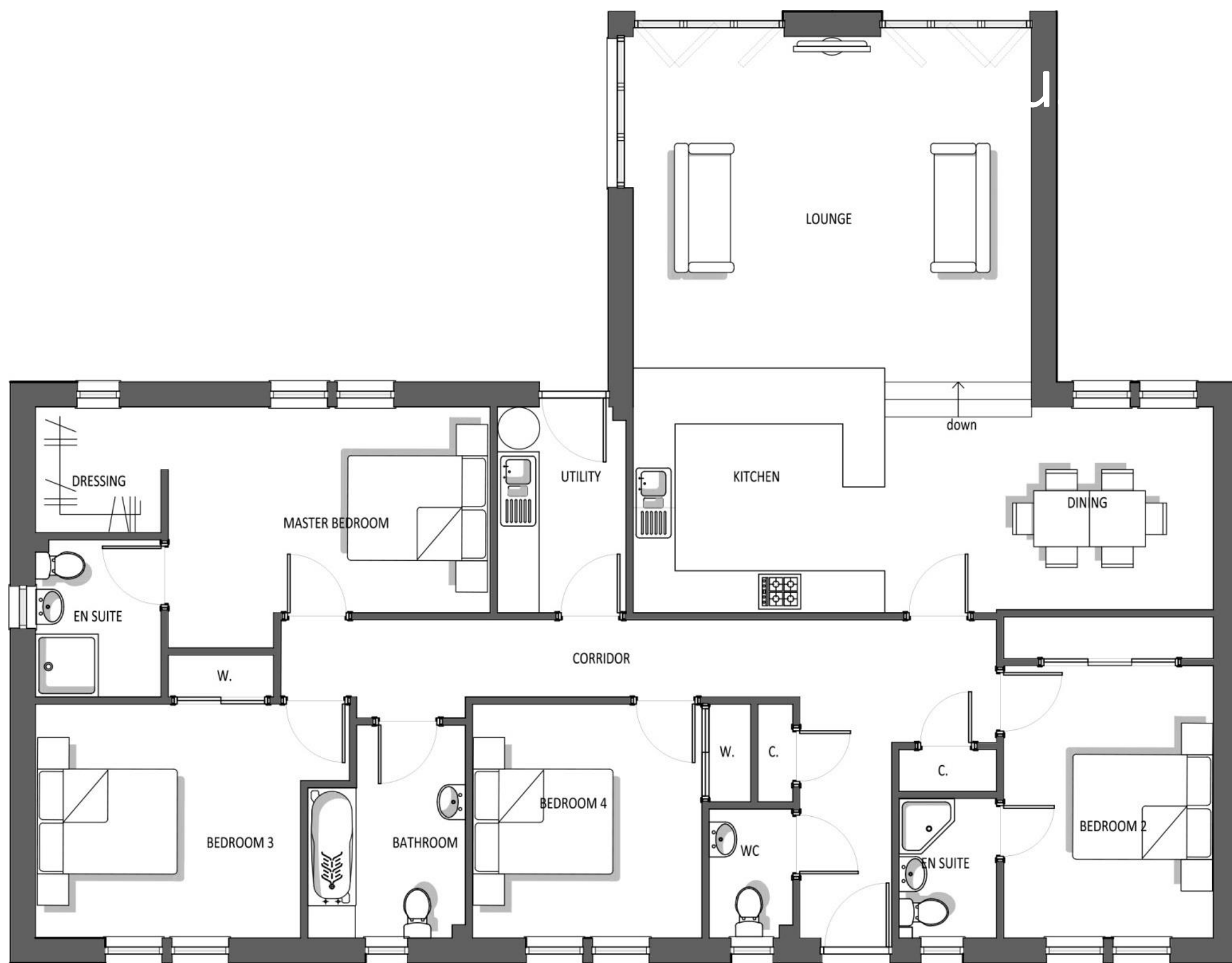




Keirhill, Plot 5

Plot size 857 m<sup>2</sup> / 0.21 acres



KEIRHILL (House Type B) – Plot 5			
Kitchen / Dining area	8.3m x 3.5m	Bedroom 2	4.6m x 3m
Lounge area	5.7m x 4.7m	Bedroom 2 En-suite	2m x 1.4m
Utility	3m x 1.85m	Bedroom 3	4.5m x 3.9m
Master Bedroom	4.6m x 3.5m	Bedroom 4	3.35m x 3.9m
Master Dressing Room	1.8m x 1.8m	Family Bathroom	3m x 2.25m
Master En-suite	2.25m x 1.8m	WC	1.2m x 1.85m

All plans, images and dimensions are for illustrative purposes only, and are intended to convey concept and vision of development/property. These may alter as work progresses and do not necessarily represent a true and accurate depiction of finished product and specification. These are not intended to form part of any contract.